

BUILDING BETTER

BY **ROSBORO**

ROSBORO is North America's premier supplier of glulam beams and the innovator of **X-Beam®** - the industry's only full-framing-width stock architectural glulam.

Our vertically integrated log-to-beam manufacturing process provides our customers with an unmatched range of high-quality stock and custom glulam products as well as western species studs and dimension lumber.



HIGHLIGHTS



Project Spotlight
Jasper Mountain



Best Practices from Jared
Fire Rated Wall Assemblies



Rosboro's Unsung Heroes
Rosboro team work for the win



Choose the Right Beam
AYC -Alaskan Yellow Cedar



What not to do...
Dull moments in the field



Industry Brief
The Resurgence of Glulam

Spotlight Jasper Mountain



Jasper Mountain provides a continuum of programs that meets the needs of emotionally disturbed children and their families. Services include an intensive residential treatment program with a therapeutic school, a short-term residential center, treatment foster care program, community-based program and crisis response services.

Jasper Mountain is a 501(c)(3) non-profit organization. Tax deductible donations can be made by contacting our business office at 541-747-1235.



Growing and Learning along with the children and families



Rosboro's donation included Douglas Fir glulam beams with an architectural finish. A timeless exposed truss roof perfectly matches the slat ceiling for all to enjoy. The glulams were all produced by the Western Structures team. Thanks to generous donations from the community of material and labor,

total project costs were cut by approximately \$300,000.

BUILDER: Chambers GC

DEVELOPER: Stingray Development

After working with the 3 1/2" wide Rosboro X-Beam, which eliminated the need for shimming beams on the job site to match standard framing widths, Jasper Mountain School contractor Randy Laule of RTL Construction is a believer.

"We need to get the word out to architects to quit drawing a 3 1/8", Laule said. "This is the best thing Rosboro has ever done"
Randy Laule, Owner, RTL Construction (Eugene, OR)

BEST PRACTICES by Jared

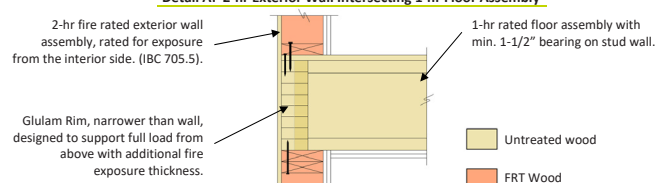
FIRE RATED WALL ASSEMBLIES

Designing for fire resistance is imperative in all building types from residential to commercial structures. Through the natural charring characteristics of wood fiber, glulam beam and column applications can provide up to a 2-hr fire resistance without the need for preservative treatment. Check out Rosboro's Fire-Rated Glulam Rim Design document for more information.

TIPS of the TRADE

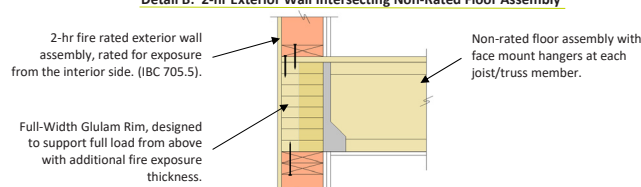
Jared Hensley, P.E., Director of Engineering

Detail A: 2-hr Exterior Wall Intersecting 1-hr Floor Assembly



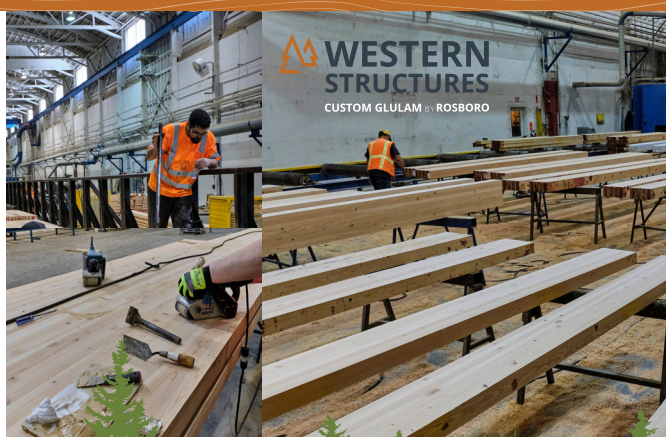
Detail A utilizes glulam rim as part of the 1-hour floor assembly allowing floor framing to bear directly on the FRT wood-framed wall below. This eliminates the need for additional blocking between framing members.

Detail B: 2-hr Exterior Wall Intersecting Non-Rated Floor Assembly



Detail B utilizes framing width glulam rim as part of the 2-hour wall assembly allowing for the use of standard face mount hangers which connect the floor framing direct to the glulam rim⁽²⁾.

ROSBORO'S Unsung Heroes



ROSBORO AS A TEAM

Did you know, the vast majority of our custom beams are hand finished? Western Structures' exceptional finish team is responsible for repairing, sanding, and ensuring that every beam produced meets or exceeds the expectations of our customers. Every day approximately 200-250 beams of all widths, depths, lengths, and appearances are produced thanks to this team.

CHOOSE the right BEAM



AYC - Alaskan Yellow Cedar Glulam

- **Naturally decay resistant and rot resistant**
- **Great machinability**
- **Used for centuries in boat building, oars, and paddles**
- **Great alternative to preservative treated wood with lead times as short as 8 days**
- **Best for use in outdoor applications**

APPEARANCE

Just as the word implies, ‘appearance’ refers to aesthetic criteria, rather than performance capabilities. Color, grain pattern, texture, knot type and size are the factors that influence the appearance classification.

GRADE

Typically, when the term ‘grade’ is used, it is referring to the beam’s structural performance and characteristics. These different grades (e.g. 24F-E4, 26F, etc.) are achieved by varying the percentage and grade of higher quality lumber in the beam layup, as well as the use of different wood species.

Curious about other appearances and options we offer?

Visit westernstructures.com and view the **Appearance & Grades tab**.

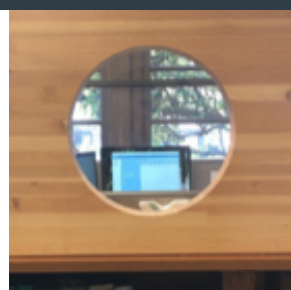
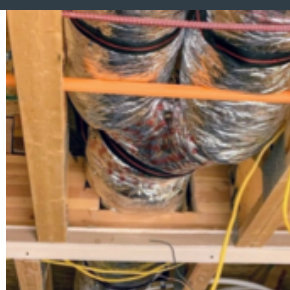


What not to do...

DULL moments in the FIELD

Poor decisions made in the field can make for expensive fixes and jobsite delays. Glulams can be fabricated with some proactive thinking for a seamless finish and less headaches!

Refer to APA technical note V700 for large diameter holes.



LOOKING FOR TECHNICAL DOCUMENTS, code reports, span tables, product literature, etc.? Head over to <https://rosboro.com/resource-library/> for a complete list of related documents.



Industry Brief The Resurgence of Glulam



THE RESURGENCE OF GLULAM

Labor shortages, price volatility, and job site delays seem all too common for the building industry. Most recently, supply disruptions caused by the COVID pandemic and historic wildfires have begun to stall projects despite surging demand for residential construction. Faced with these challenges, it might be easy to adopt a “What could possibly be next?” mindset. Alternatively, we can lean on the wisdom of Albert Einstein who famously said, “In the middle of difficulty lies opportunity.” The winners in this environment will be those who refuse to cut their losses and continue to find a way to win. Wins are reserved for the grinders. The engineers, designers, specifiers, builders, and sales reps who relentlessly look for a better way.

Glulam beams and columns have long been among the most cost-effective framing solutions available. Your peers (and competition) are starting to give glulam a second look across a wider range of applications, hoping to overcome availability issues with LVL and LSL. Have you considered all your options? Don’t get beat to an opportunity just because you aren’t willing to try something new.

X-Beam as an alternative to LVL

LVL outages and long lead times have pushed entrepreneurial builders to start using X-Beam

in place of LVL. In most cases, the 1.8E **Rosboro X-Beam®** is direct substitute for LVL and will typically save you money by being the more cost-effective choice. Our product availability program ensures that X-Beam is more widely available than alternative products. Since X-Beam is full-framing-width it drops easily into place with conventional 2x4 and 2x6 wall framing.

Consider X-Rim and 1.6E ESL in rim, tall wall, and light-duty header applications

Product outages are impacting more than just beams, headers, and joists. We have heard many stories where an alternative solution is needed for rim applications, tall wall framing, or window and door openings. Several builders have converted LVL rim specifications to **Rosboro X-Rim™**, a glulam product specifically engineered for rim applications. They are also finding this to be a great long-term fit because they are saving money on materials and installation. In areas where LSL is commonly used, builders are flocking to **Rosboro’s 1.6E ESL**, a lighter duty glulam that matches LSL’s load carrying capacity.

If you need a competitive advantage in this market where availability is critical, give one of our Market Development Managers a call. We’ll work with our engineering team to find solutions and get you Building Better.



Truly Green

Rosboro’s mission is to leave the Earth better than we found it. We source logs through state, federal, and private timber sales and adhere to the Oregon Forest Practices Act. We work with locally-based conservation groups to reforest our timberlands responsibly. Learn more about our commitment to sustainability.

Our Products

Western Structures™ Custom Glulam
X-Beam™ | Next-Generation Glulam 24F-V4
X-Rim™ | Next-Generation Rim
X-Beam™ Columns
1.6E ESL | Engineered Structural Lumber
Rosboro Laminated Decking™
Dimension Lumber
Studs



ROSBORO NEWSLETTER 2021.1

PO Box 20 Springfield, Oregon 97477

Glulam Technical Support: 877-457-4139

Commodity and Stud sales: 888-393-2304

www.rosboro.com



TALK TO A ROSBORO EXPERT TODAY

